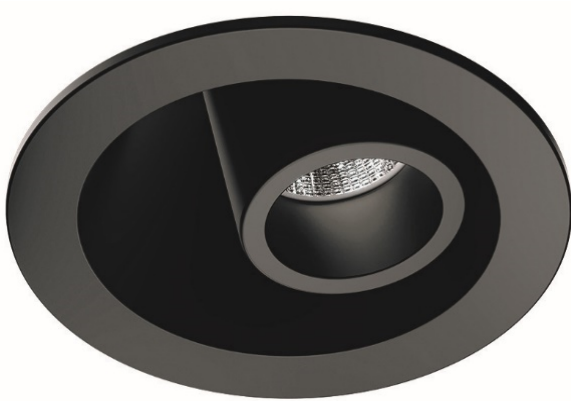


Item L9327

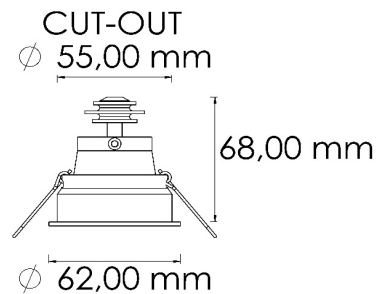
Adjustable Downlight For Interior

IP20



DESCRIPTION

Directional luminaire for interior with round frame, easy and fast springs mounting and maintenance. Suitable for any living area.



Trim Ring Material

ALUMINIUM

Trim Ring Finish

ANY

Body Material

ALUMINIUM

Mounting Method:

SPRINGS

Power

4W - 6W

Voltage forward

12 V

Driver

10-30V DC / 220V (Not Included)

Dimmable

ON REQUEST

Luminaire lumens output

248 LM (4W)

346 LM (6W)

Colour Rendering Index

90 CRI - OTHERS ON REQUEST

Colour Temperature

3000K - OTHERS ON REQUEST

Beam angle Output

36°



Information provided with this may be subjecte to change any time without notice